



SAN PEDRO SPRINGS PARK MASTER PLAN

CITY OF SAN ANTONIO, TEXAS

05.07.13

BEATY PALMER ARCHITECTS



SAN PEDRO SPRINGS PARK

MASTER PLAN

OVERVIEW

- BRIEF HISTORY OF THE PARK
- REVIEW OF 1994 MASTER PLAN
- STATUS OF CURRENT MASTER PLAN IMPLEMENTATION
- 2013 DRAFT MASTER PLAN
- 2013 DRAFT CURRENT CONSTRUCTION SCOPE

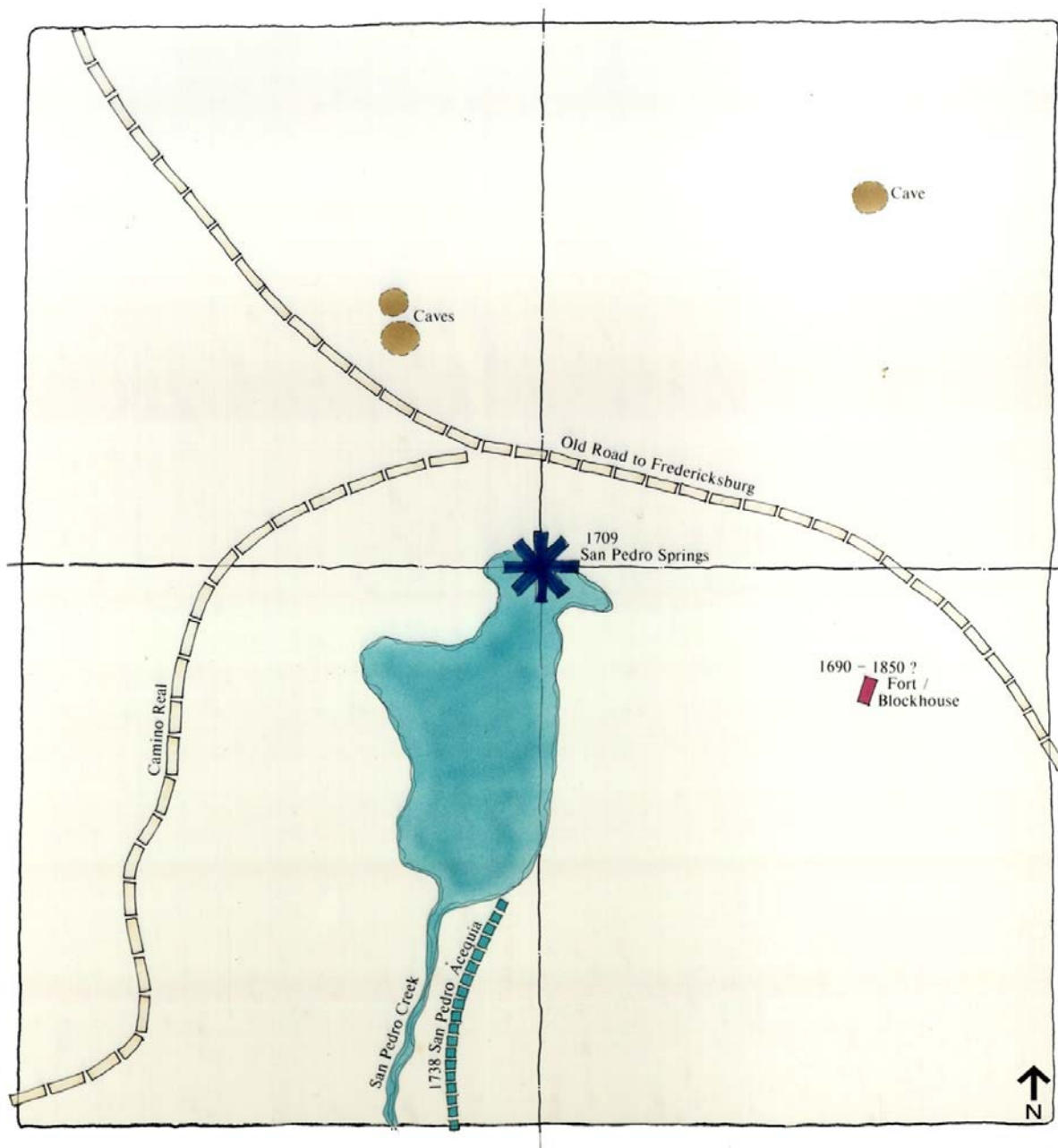




HISTORIC CHRONOLOGY

1709 - 1860

- **1709** SAN PEDRO SPRINGS NAMED
- **1718** MISSION SAN ANTONIO DE VALERO
- **1722** MISSION MOVED TO ALAMO SITE
- **1729** KING OF SPAIN GRANTS AREA FOR PUBLIC LAND
- **1738** SAN PEDRO ACEQUIA IN PLACE
- **1845** FIRST MILITARY BASE IN TEXAS
- **1852** OFFICIAL DEDICATION AS MUNICIPAL PARK

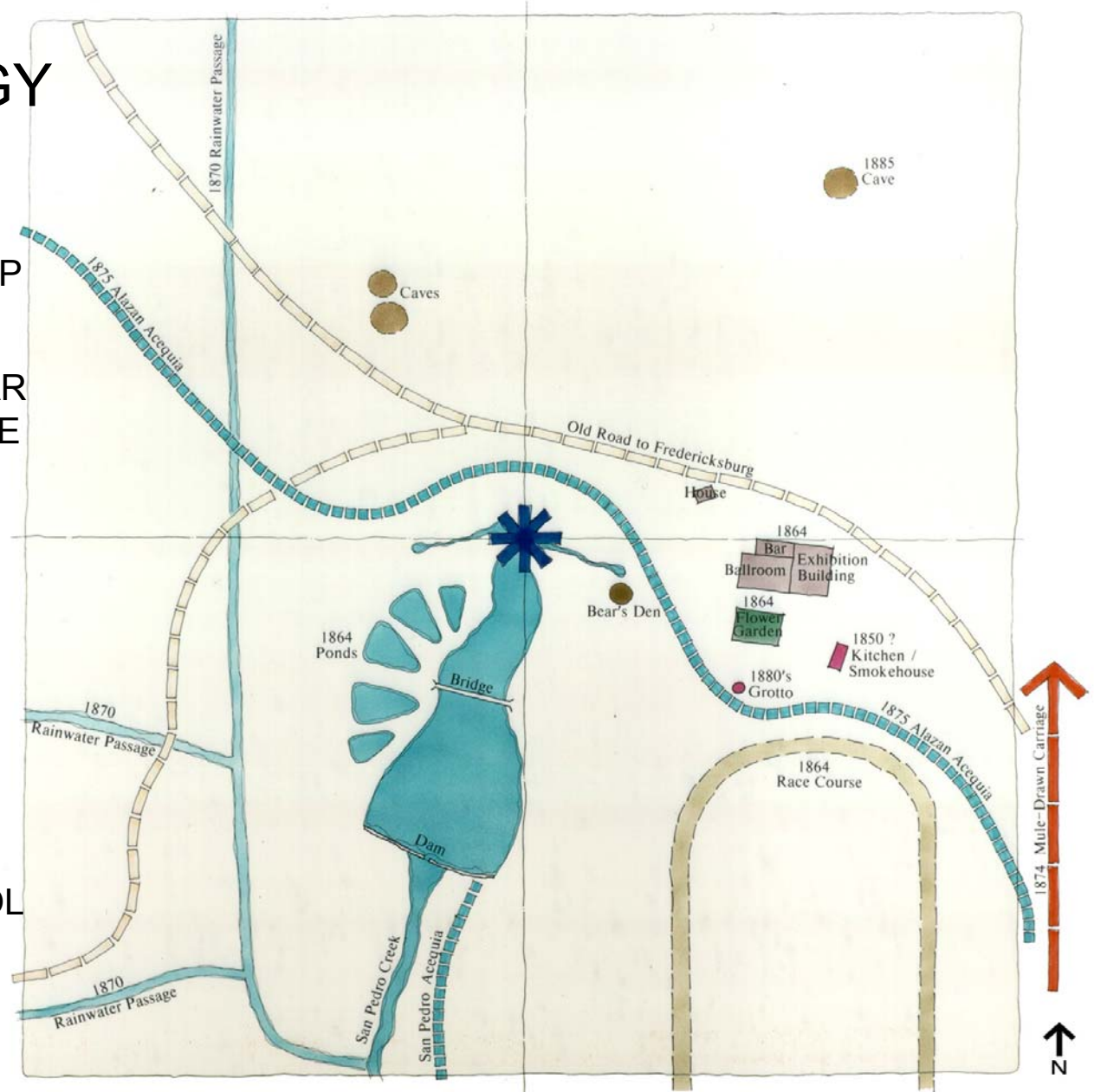




HISTORIC CHRONOLOGY

1860-1899

- **1860's** CIVIL WAR POW CAMP
- **1864** J.J. DUERLER 20-YEAR CONCESSIONS LEASE
- **1874** MULE-DRAWN STREETCARS TO PARK
- **1875** ALAZAN ACEQUIA BUILT
- **1891** CITY TAKES CONTROL OF ALL PARKS
- **1895** ALAZAN ACEQUIA ABANDONED

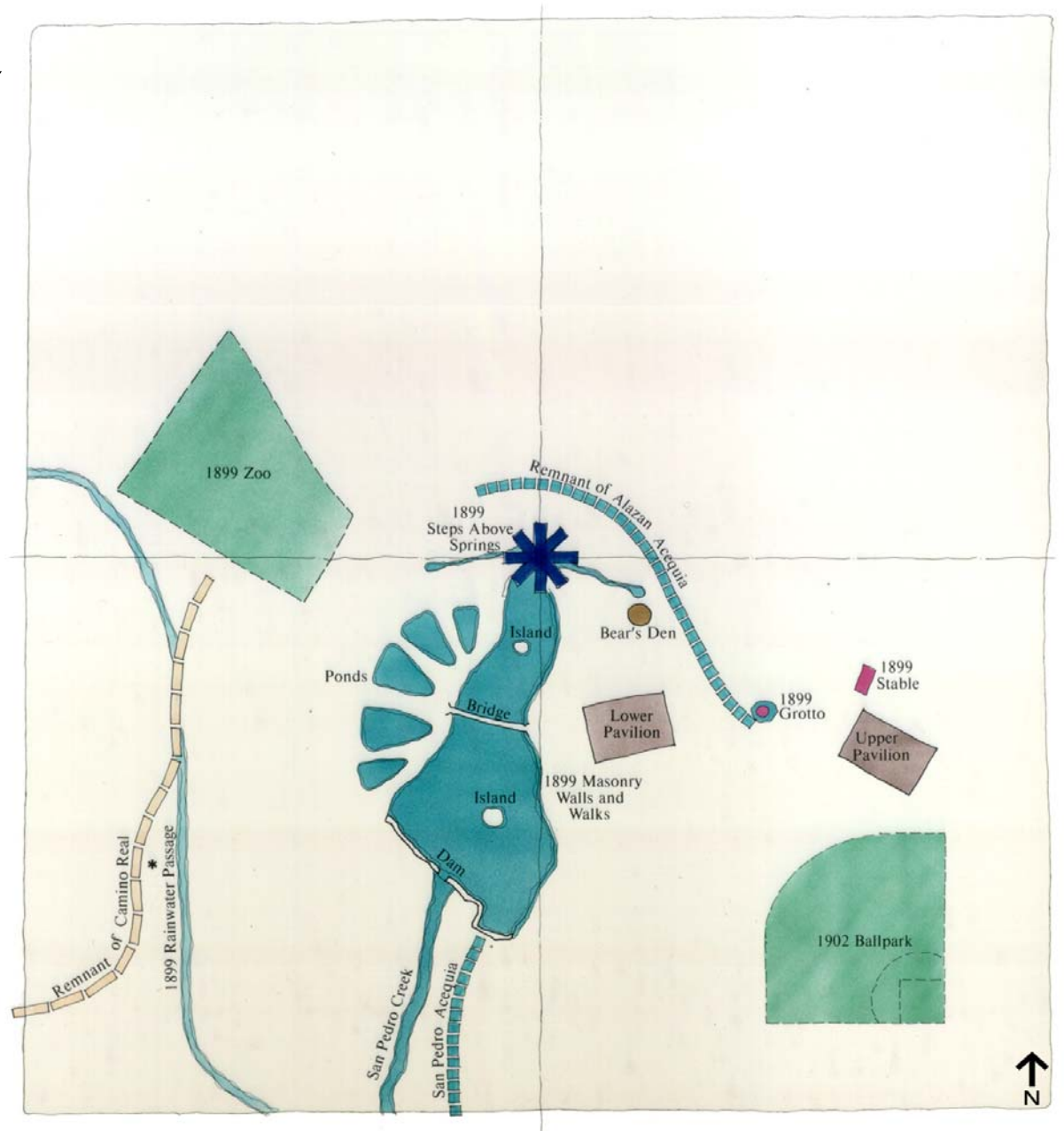




HISTORIC CHRONOLOGY

1899-1920

- **1899** FIRST SA ZOO ESTABLISHED
- **1902** BALLPARK
- **1912** SAN PEDRO ACEQUIA ABANDONED
- **1920's?** TENNIS COURTS

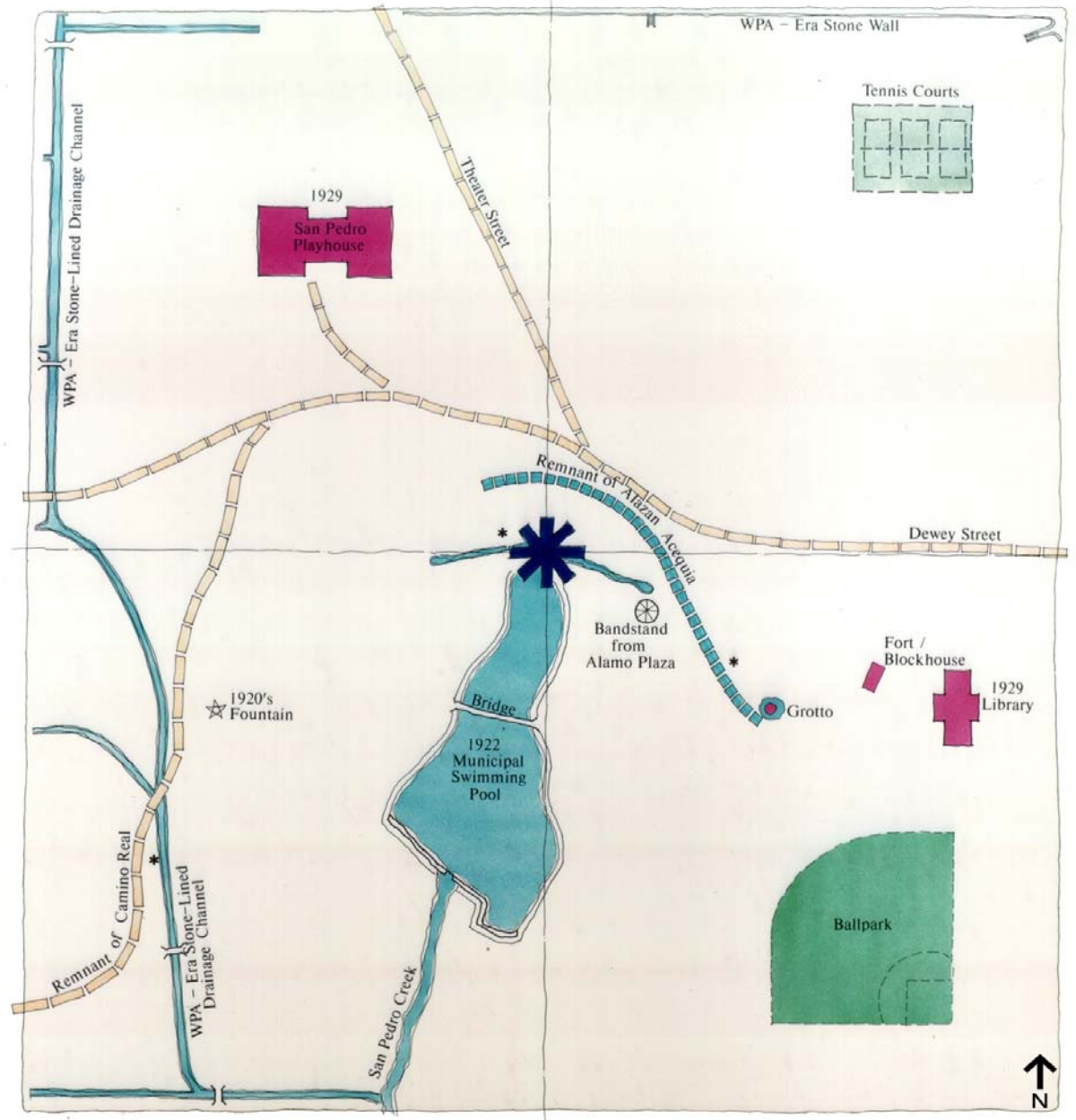




HISTORIC CHRONOLOGY

1922-1952

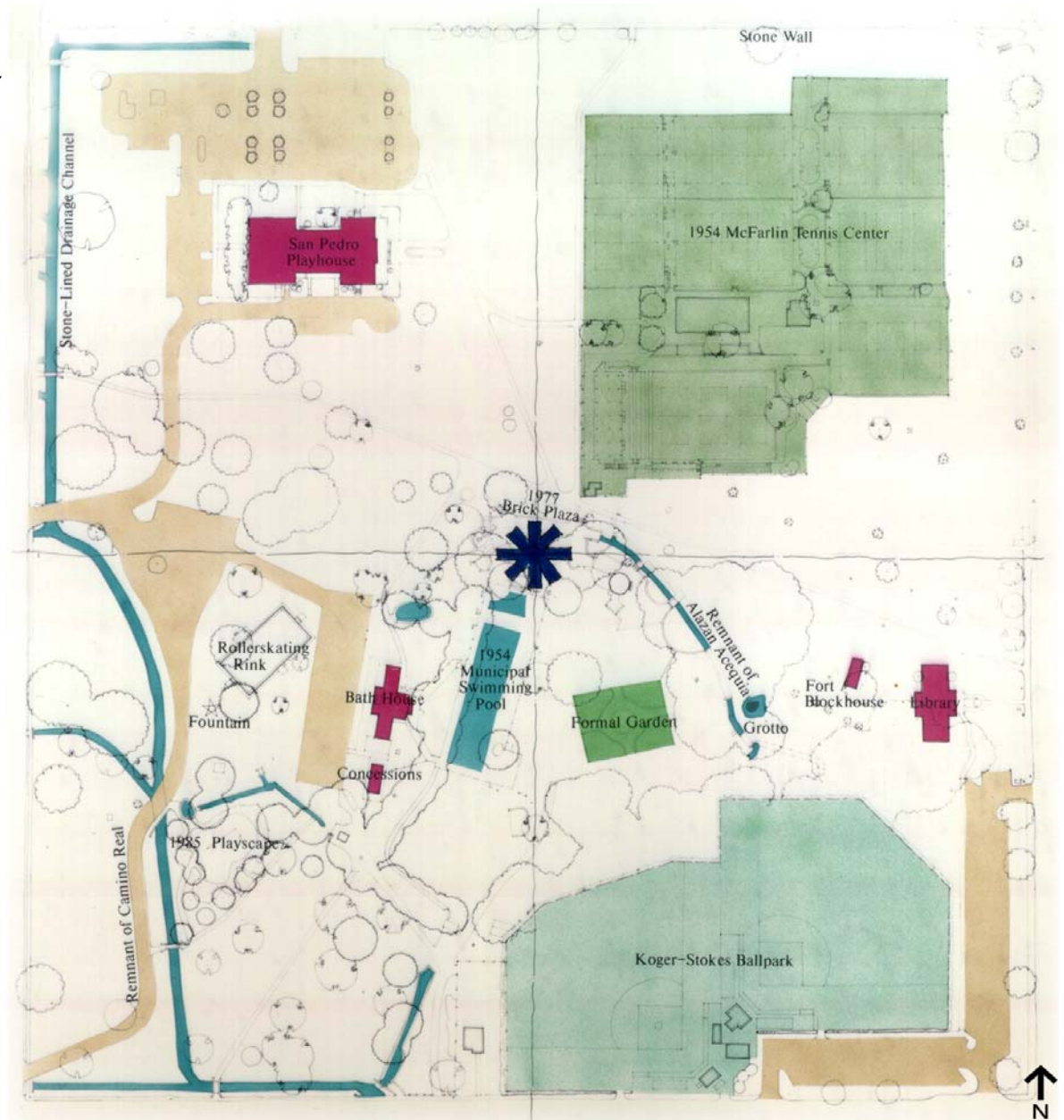
- **1922** LAKEBED LINED FOR POOL
- **1929** SAN PEDRO PLAYHOUSE
- **1929** FIRST CITY BRANCH LIBRARY
- **1930's** WPA WALLS & CHANNELS
- **1940** POOL CLOSED





HISTORIC CHRONOLOGY 1952-1992

- **1954** MCFARLIN TENNIS CENTER
- **1954** CONVENTIONAL POOL BUILT
- **1973** DEWEY ST. & THEATER ST. CLOSED
- **1992** MASTER PLAN COMMISSIONED BY SA PARKS FOUNDATION





HISTORIC CHRONOLOGY SUMMARY

- SAN PEDRO SPRINGS HAVE ALWAYS BEEN THE PHYSICAL, HISTORIC AND AESTHETIC CENTER OF THE PARK.
- A FORMAL, ROUGHLY-SQUARE BOUNDARY HAS ALWAYS DEFINED THE PARK'S LIMITS.
- BOTH ACTIVE AND PASSIVE RECREATION, AS WELL AS AN ARRAY OF BUILT STRUCTURES, HAVE ALWAYS BEEN PART OF THE FABRIC OF THE PARK.





EXISTING CONDITIONS 1992

- SPRINGS VISUALLY OVERWHELMED
- UNDEFINED PARK EDGES
- HISTORY OBSCURED
- DISCONNECTED RECREATIONAL OPPORTUNITIES





MASTER PLAN CONCEPTS

1994

- RESTORE SPRINGS AND CENTRAL WATER FEATURES
- RE-ESTABLISH PARK'S FORMAL BOUNDARIES
- REINFORCE PARK HISTORY
- IMPROVE/CREATE RECREATION AREAS





MASTER PLAN 1994





MASTER PLAN

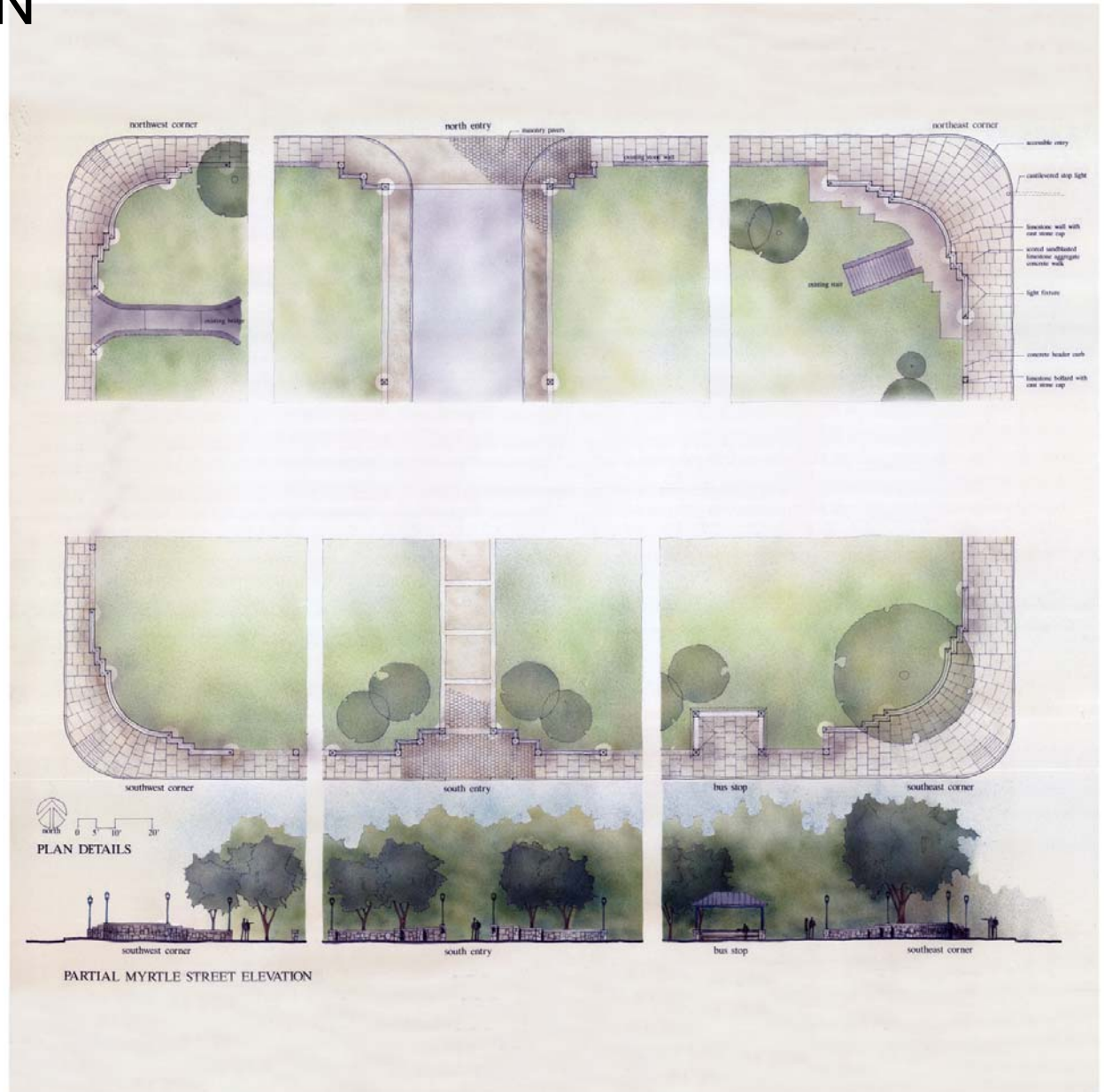
1994





MASTER PLAN

1994





MASTER PLAN

1994





MASTER PLAN

1994



BUILDING SECTION



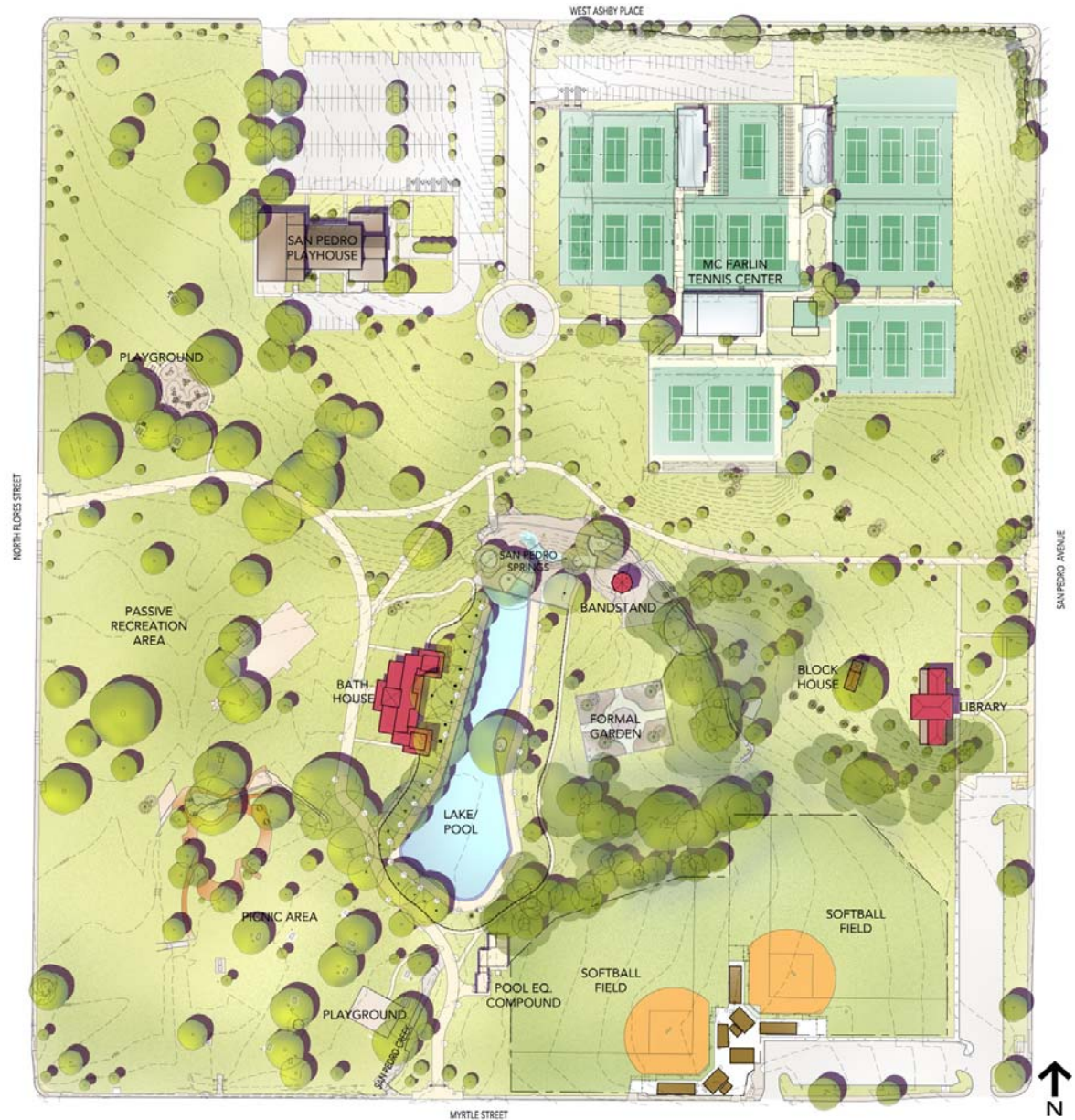
Mc Farlin Tennis Center
SOUTH ELEVATION



EXISTING CONDITIONS 2013

“THE GOOD NEWS”

- SPRINGS/WATER FEATURES RESTORED
- “BREATHING SPACE” CREATED AROUND SPRINGS
- POWER POLES/DRAINAGE CHANNELS REMOVED FROM PERIMETER
- LARGE WALKWAYS THROUGH PARK’S CENTER ADDED
- PEDESTRIAN LIGHTING THROUGH PARK’S CENTER ADDED
- STRUCTURES UPDATED
- RECREATIONAL OPPORTUNITIES IMPROVED

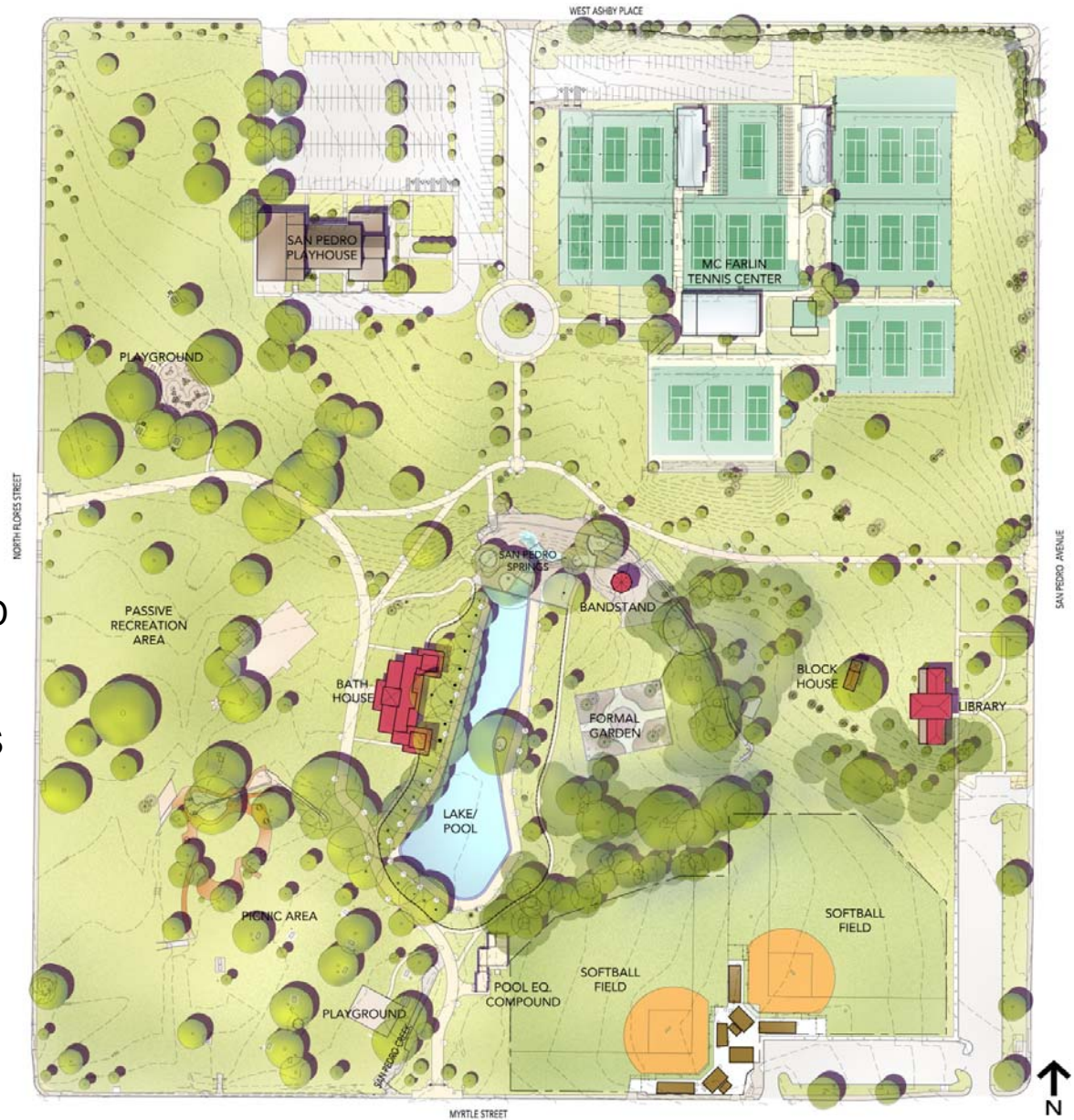




EXISTING CONDITIONS 2013

“THE BAD NEWS”

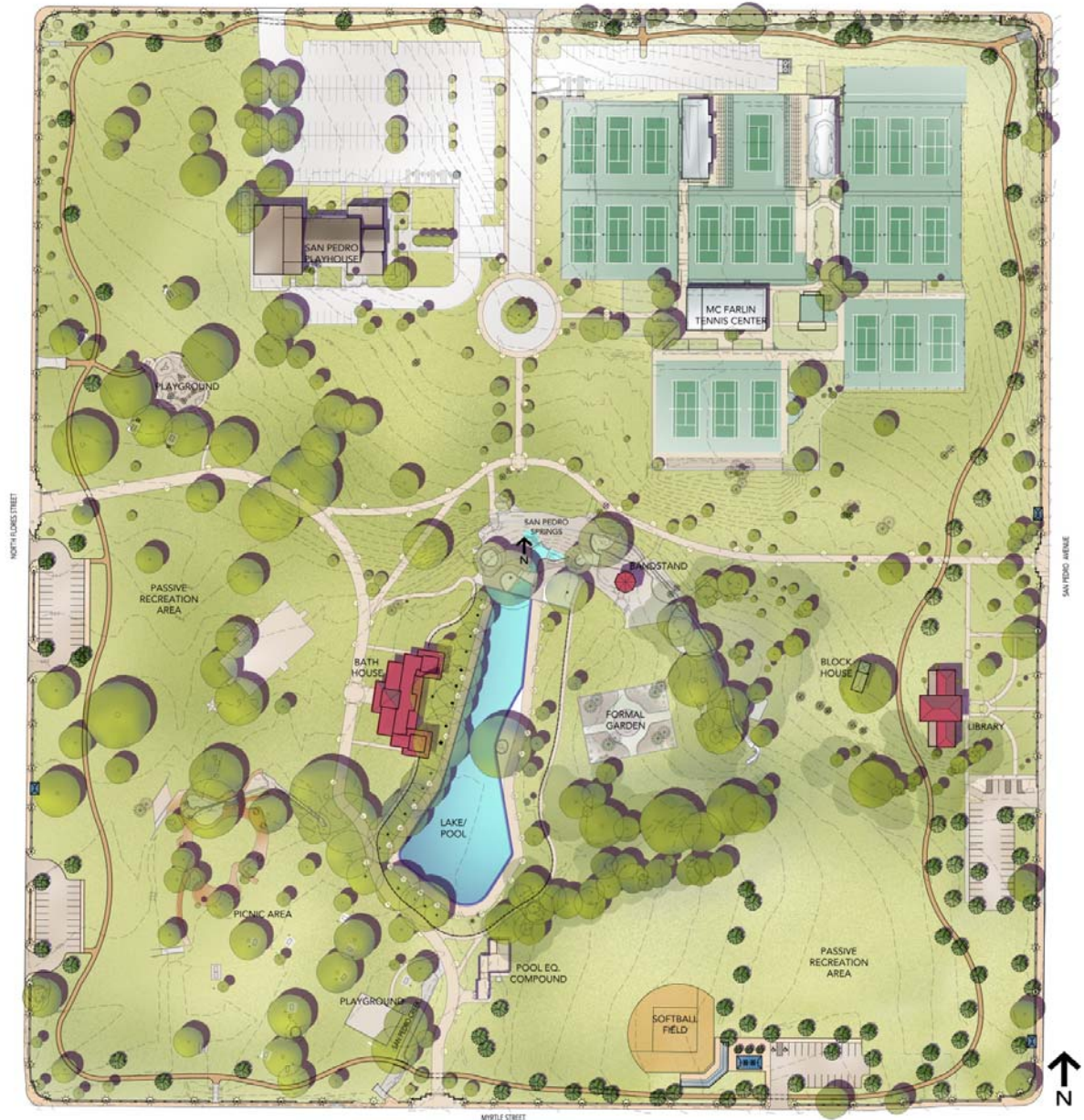
- PARK EDGE REMAINS POORLY DEFINED
- NO PERIMETER LIGHTING IN PLACE
- PROLIFERATION OF SIGNAGE AND OTHER VISUAL POLLUTION
- SOUTHEAST QUADRANT REMAINS “LOST” TO INFORMAL USE
- UNTAPPED OPPORTUNITIES FOR NEW ACTIVE AND PASSIVE RECREATION
- PARKING REMAINS INADEQUATE





DRAFT MASTER PLAN 2013

- RE-ESTABLISH PARK'S FORMAL BOUNDARIES
- REINFORCE PARK HISTORY
- IMPROVE/CREATE RECREATION AREAS

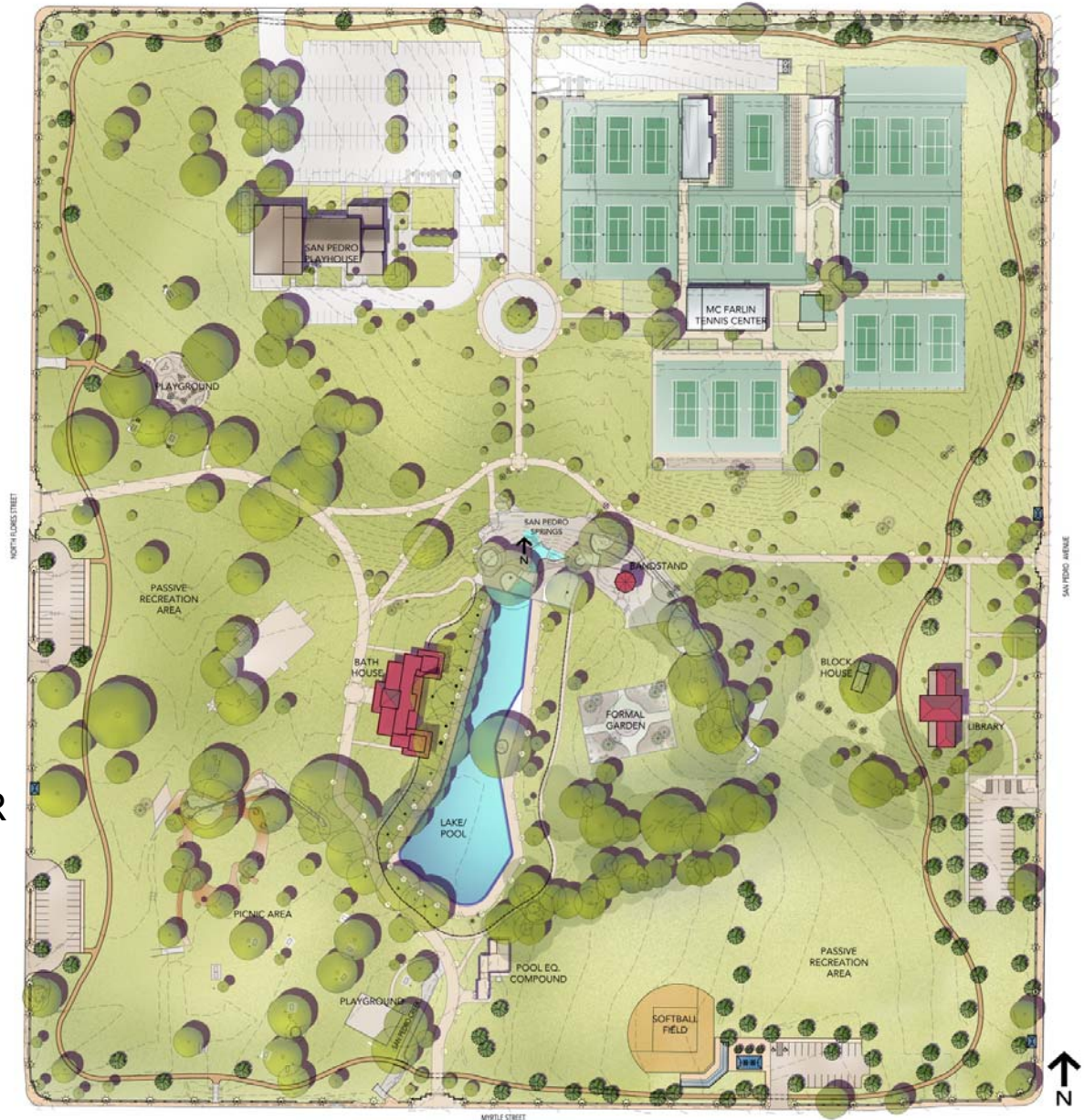




DRAFT MASTER PLAN 2013

RE-ESTABLISH PARK'S FORMAL BOUNDARIES

- NEW PERIMETER WALK
- NEW PERIMETER PEDESTRIAN-SCALE LIGHTING
- COMPLETE "GATEWAY" SYSTEM AT CORNERS AND CENTER POINTS
- PROVIDE ORGANIZED SIGNAGE
- IMPROVE/ORGANIZE BUS

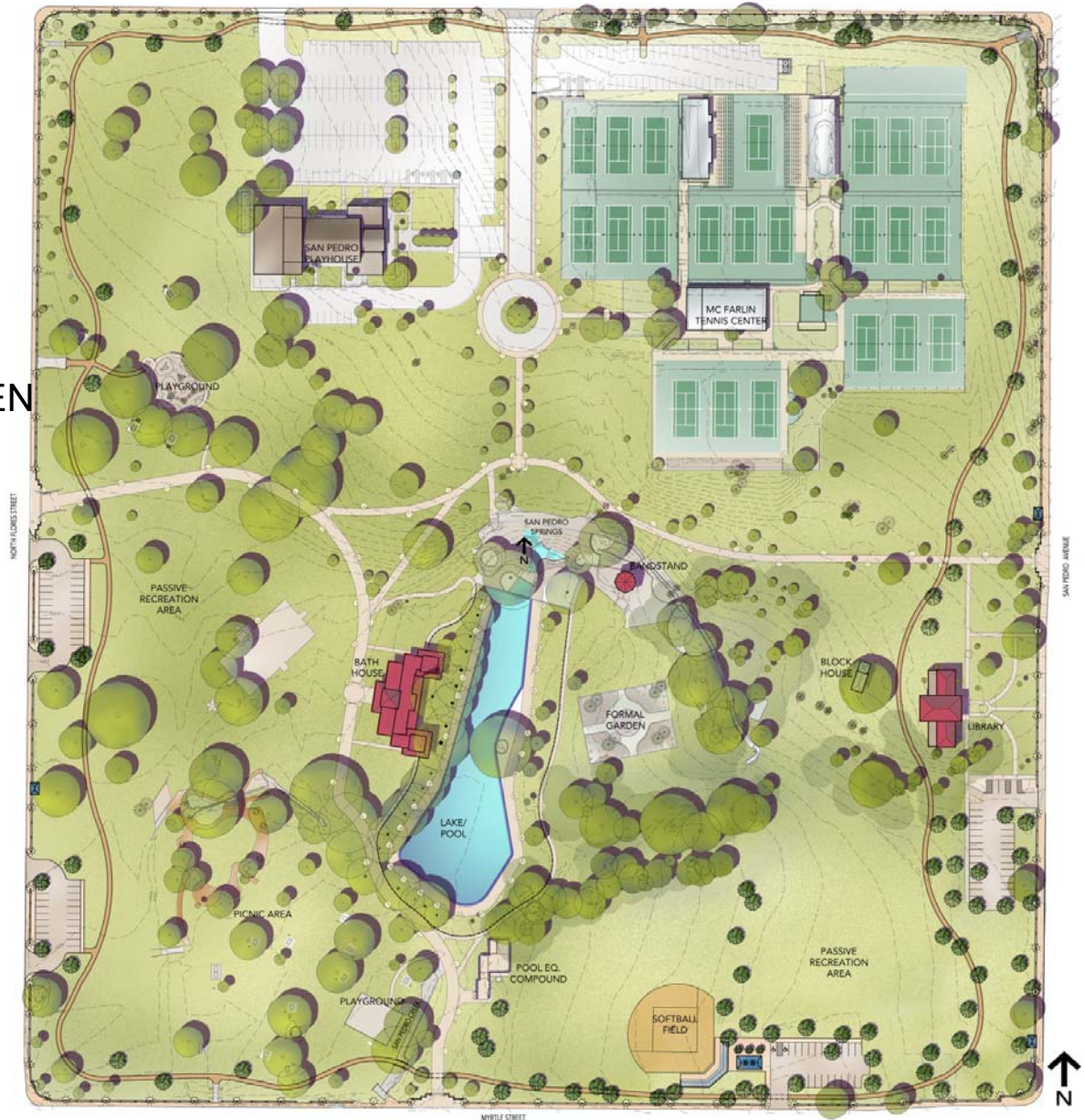




DRAFT MASTER PLAN 2013

REINFORCE PARK'S HISTORY

- IMPROVE FORMAL GARDEN
- IMPROVE GROTTO
- IMPROVE BLOCKHOUSE
- RESTORE ACEQUIA
- DEVELOP SELF-GUIDED
HISTORIC
PARK TOUR (VIA
SMARTPHONE?)
- OTHER?

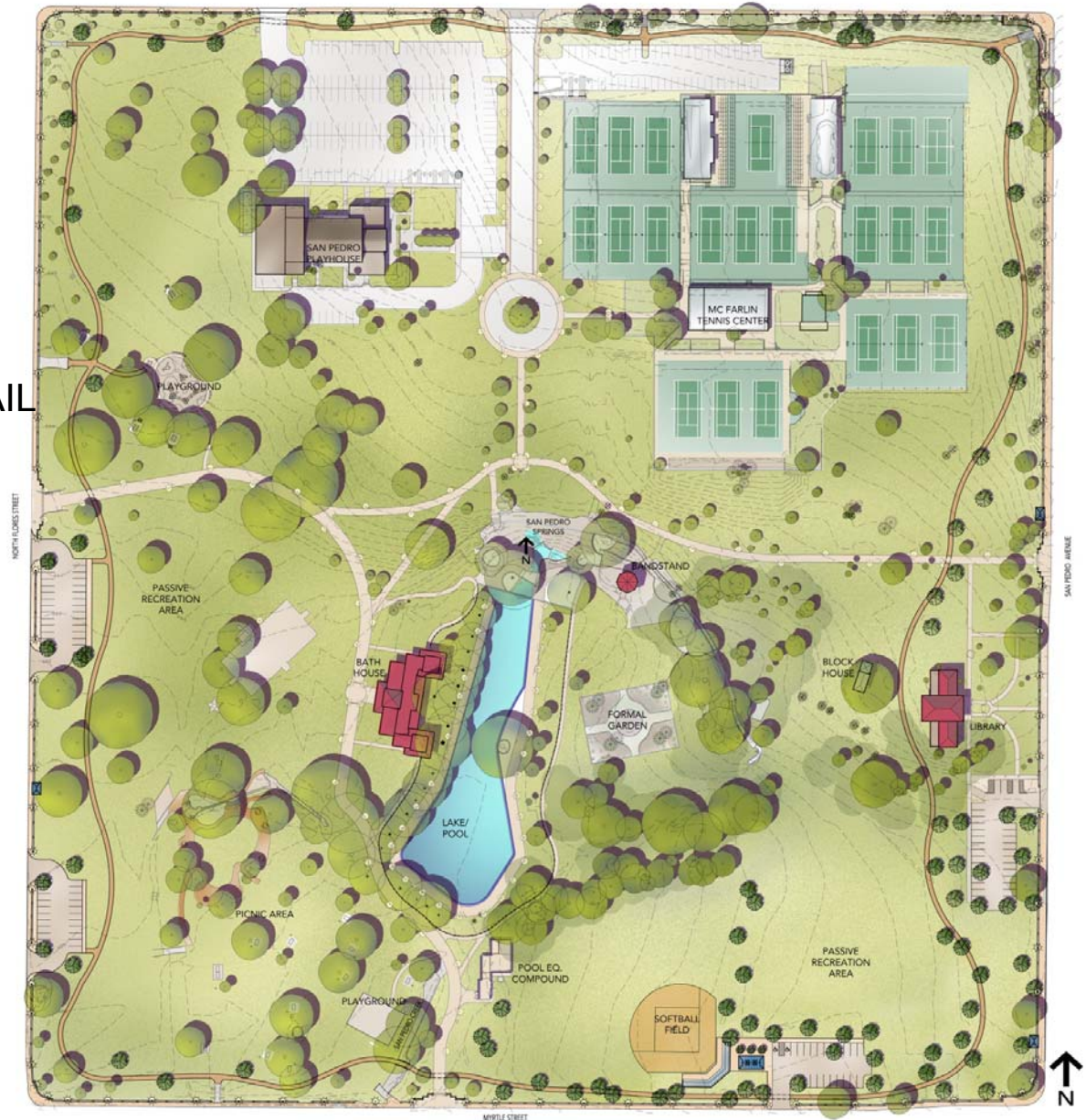




DRAFT MASTER PLAN 2013

IMPROVE/ CREATE RECREATION AREAS

- ADD 1-MILE JOGGING TRAIL
- OPEN SOUTHEAST QUADRANT TO PASSIVE RECREATION
- ADD/RE-CONFIGURE PARKING AREA
- ADD PICNIC AREA, TRASH CANS, BENCHES
- OTHER?





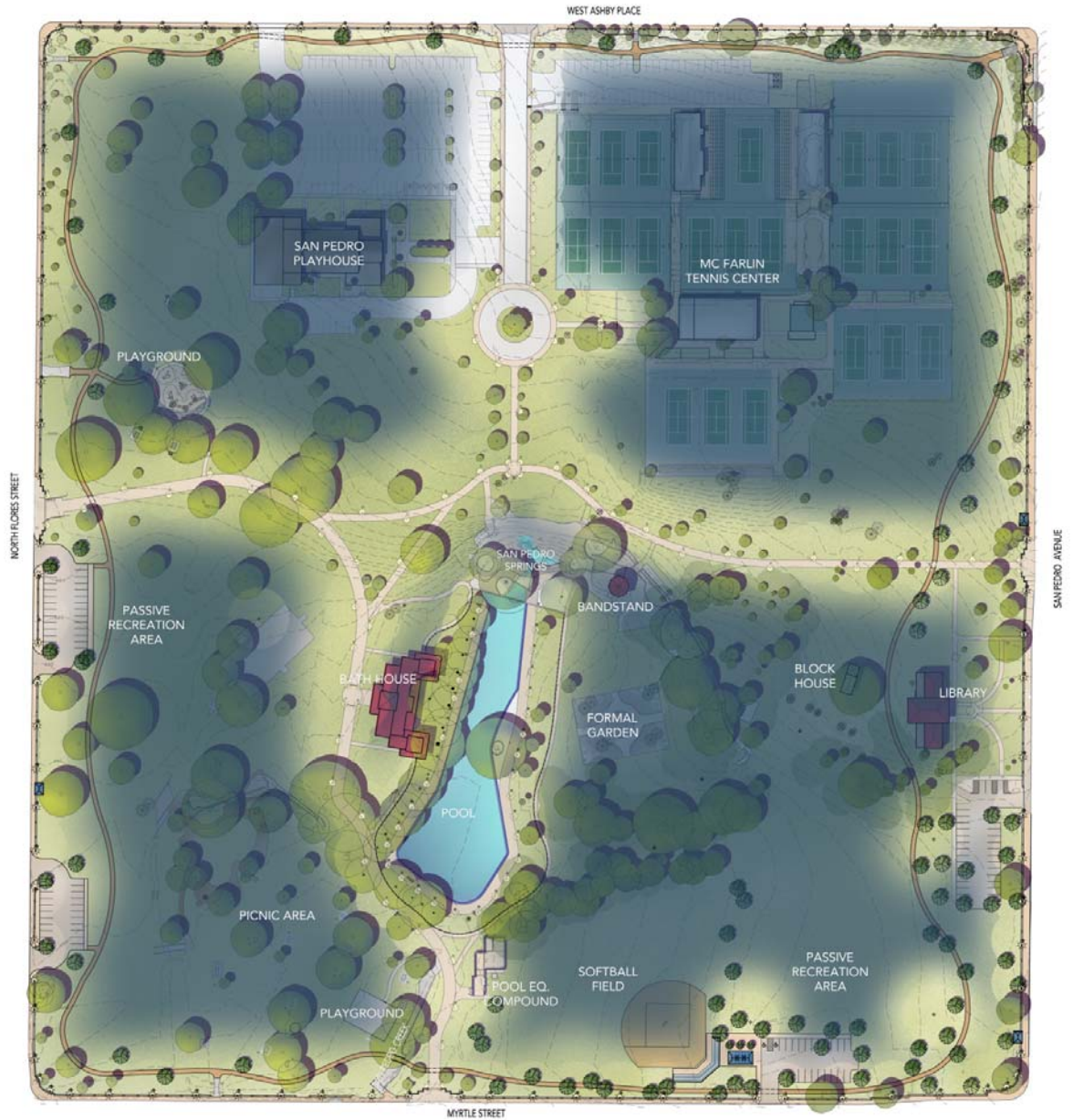
EXISTING LIGHTING

2013





MASTER PLAN LIGHTING 2013





DRAFT/CURRENT CONSTRUCTION SCOPE

- 3/4 MILE JOGGING TRAIL
- PERIMETER LIGHTING TO COORDINATE WITH MASTER PLAN

